

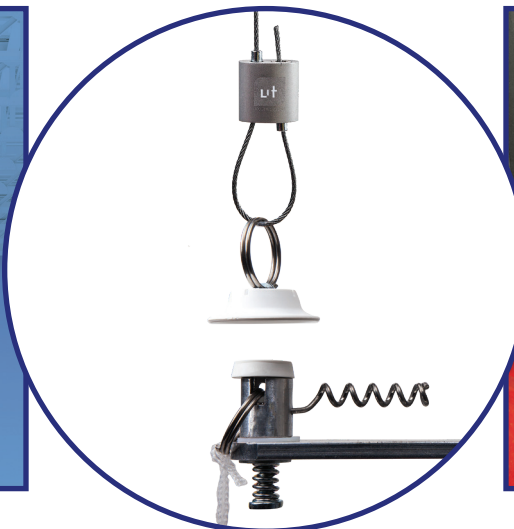
Meet Taller Ceilings Halfway

FlatHat™ creates a connection point you can reach

The Klik-Klik™ Magnetic Sign Hanging System is the perfect solution for managing ceiling signs, in areas up to 27 feet tall, from the safety of the floor. However, ceilings in commercial spaces taller than 27 feet, are simply out of reach and stay unused ... *Until Now.*

The **FlatHat Receiver**, our innovative Klik-Klik accessory, connects you with **taller interior ceilings**. FlatHat Receivers are attached to the ceiling with steel cable and positioned to hang about 20 feet above the floor. This one-time installation creates a fixed connection point that uses the Klik-Klik System to install and retrieve signs without a ladder.

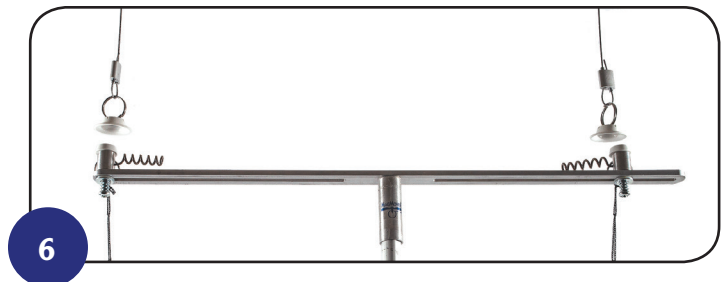
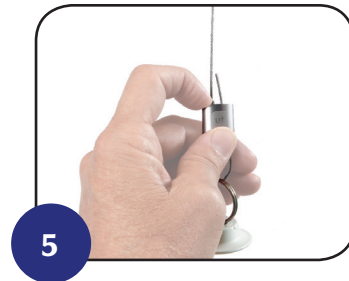
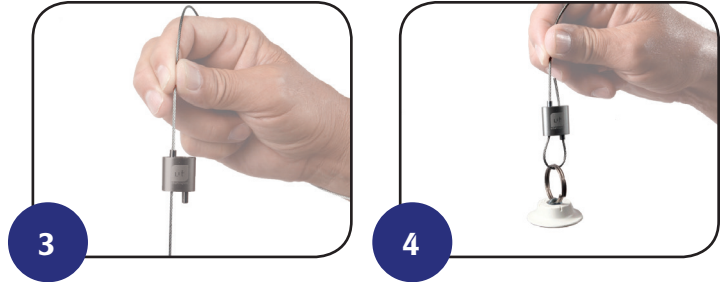
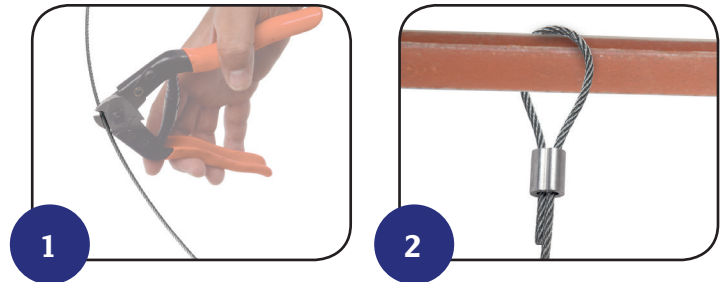
Ceiling Outfitters® has everything you need to implement FlatHat making sign installation *Simple, Fast, and Safe.*



One-Time FlatHat Installation

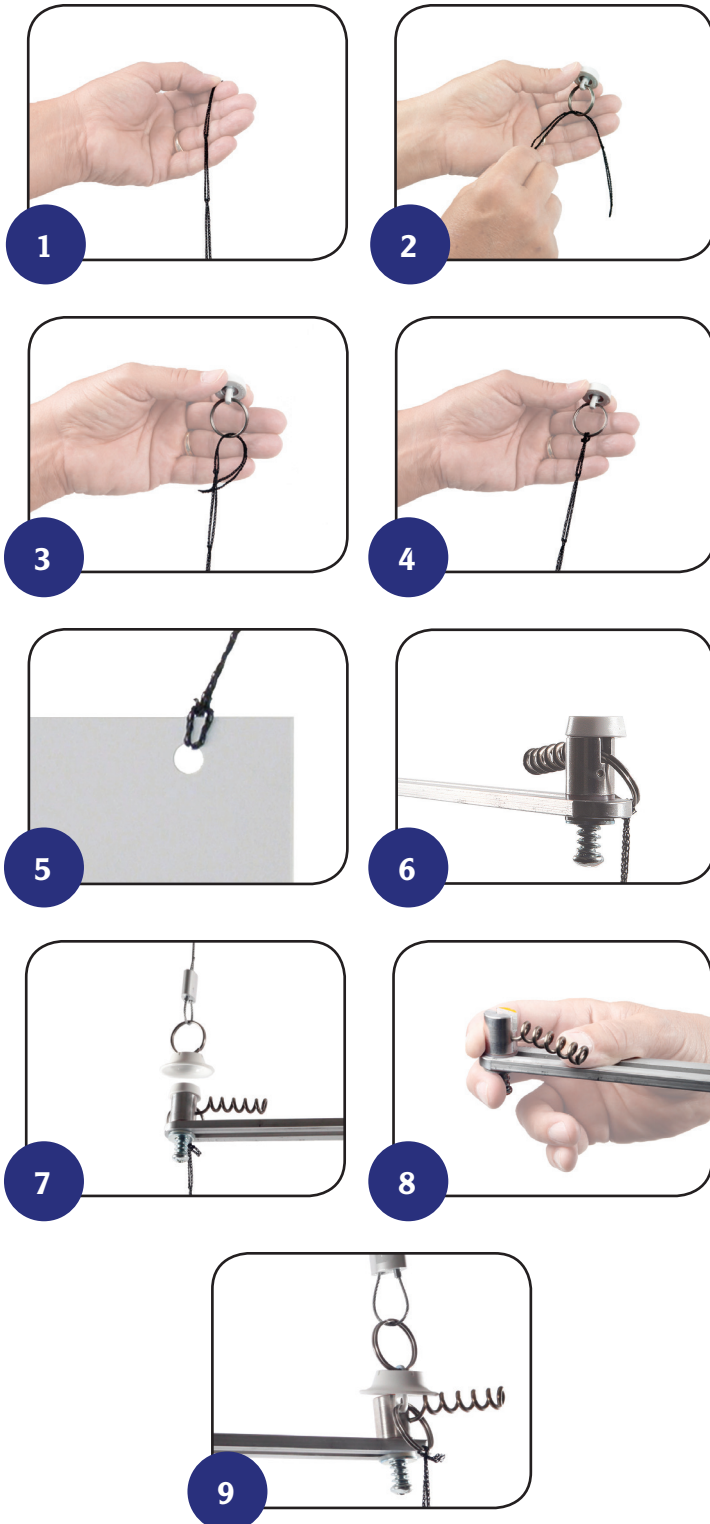
The FlatHat Receiver provides an easily reachable connection point for hanging signs using the Round KlikMagnet™. To install the Receivers, access the ceiling with a scissor lift and follow the instructions below. Once the Receivers are installed, the scissor lift is no longer needed.

- A. Cut 2 pieces of steel cable to the desired length, typically 15-20 ft less than the height of the connection point where the cable is anchored to the ceiling. For example, for a 50-foot ceiling, cut the cable to between 30 and 35 feet long. **1**
- B. Loop one end of the cable around the ceiling beam and secure with a crimp. **2**
- C. Feed the free end of the steel cable through one of the arrow-guided clutch buttons on the UrbanTrapeze™. **3**
- D. Continue feeding the cable through the ring on the FlatHat™ Receiver and through the other clutch button on the UrbanTrapeze. **4**
- E. Incrementally adjust or level the Receiver with the push of either button on the UrbanTrapeze. **5**
- F. Repeat steps B-E to install the second FlatHat Receiver. The distance between the two Receivers should be 24 inches for easy connection with the 24-inch Dual MagMover. **6**
- G. Signs do not have to be 24 inches wide; but we recommend the sign's grommets be 24 inches apart. **7**



Clik-Clik Sign Installation

The unique Clik-Clik™ Magnetic Sign Hanging System ends the need to climb a ladder or rent a lift for sign installation. A single individual can confidently connect signs to the FlatHat™ Receivers from the safety of the floor using the Clik-Clik System. Make hanging ceiling signs *Simple, Fast, Safe,* and economical with Clik-Clik.



- A. Cut LoopLine™ to the desired length with scissors. Make sure each line has the same number of loops so the sign will hang level. ❶
- B. Insert one end of LoopLine through the ring on the Round ClikMagnet™. Feed the opposite end of the line through the first loop and pull tight to finish the connection. ❷ ❸ ❹
- C. Insert the opposite end of the line through the sign hole or a banner hanger clip. Feed the attached Round ClikMagnet completely through the first loop and pull tight. ❺
- D. Repeat the above steps for the second line.
- E. Place each Round ClikMagnet onto the MagMover™ already threaded onto the MagPole™. Set the post of the ClikMagnet in the slot, the magnetic surface toward the ceiling and the ring of the ClikMagnet facing out. ❻
- F. Extend the loaded MagPole toward the ceiling and connect your first Round ClikMagnet to the FlatHat Receiver. The unique shape of the Receiver helps guide the magnet to the built-in metal plate for a secure magnetic connection. Repeat with the next Receiver. ❼
- G. To remove the ceiling display, rotate the corkscrew on the MagMover and extend the MagPole. ❽
- H. Insert the corkscrew through the ring on the Round ClikMagnet. With a gentle but firm tug the Round ClikMagnet will release from the Receiver. Repeat at the next Receiver. ❾
- I. Reverse steps B-C to remove LoopLine for repeated use.

877.866.2545

No Ceiling is Too High for FlatHat

Works well in any environment including retail sites, commercial and manufacturing spaces, convention centers, warehousing areas, educational facilities, and sporting venues.

- Creates a dedicated connection point for safely hanging signs without a ladder
- Requires one-time installation of FlatHat Receivers
- For use with open-beam ceilings
- Reduces sign installation time by up to 70%
- Uses Clik-Clik System's MagPole and MagMover to attach signs to the FlatHat Receivers
- Suitable for ceilings of any height
- Eliminates hazardous falls
- All components are reusable

10-Sign Super-Tall Ceiling Kit

Hang up to 10 signs with FlatHat and Clik-Clik

- 1 500-foot Spool of 1/16-inch Steel Cable
96-pound workload, uncoated 7x7 strand construction
- 20 1/16-inch Aluminum Crimps
- 20 UrbanTrapeze™ Model 1.5
44-pound holding power, self-locking mechanism
- 20 FlatHat Receivers
- 1 MagPole
Extends to 18 feet (5.5m)
- 1 Adjustable Dual MagMover
24-inches wide (61cm)
- 20 Red Round ClikMagnets
Up to 20-pound magnetic pull (9.1kg)
- 1 82-foot Spool of LoopLine
Available in black, clear or white

Call for Pricing



Also available: 20-Sign Super-Tall Ceiling Kit